

Sanlixin Solenoid Valve

SMP Compact Series 2/2-way Direct Acting Solenoid Valve · Normally Closed

Solenoid Valves Model Numbering System for Order

1	2	3	4	5	6	7	8	9	10
Valve Series	Mode of Operation	Coil Type	Coil Class	Voltage	Seal Material	Body Material	Pipe Size	Orifice (mm)	Options
SMP	1	M	F	02	N	1	B	03	<input type="checkbox"/>
SMP	1:Normally Closed	M=SM Series Coil	F=F Class	02= AC220V AC230V 01= AC110V AC120V 13=DC24V	N=NBR V=VITON E=EPDM	1= Forged brass 3=SS316 1= Forged brass 4=SS304	A=1/8 " B=1/4 " C=3/8 " D=1/2 "	02=2.0 C3=2.5 03=3.0 04=4.0 05=5.0 06=6.0 C8=7.5 03=3.0 04=4.0 05=5.0 06=6.0	L= Neon lamp N= NPT pipe size P=PT R=RC T=Timer

SMP Compact Series 2/2-way Direct Acting Solenoid Valve · Normally Closed

1. 2/2-way Compact Direct Acting Solenoid Valve, closed when de-energized, open when energized.
2. The product is special design, power will be normal type 1/4, low temperature, small in size, large flow rate, widely use.
3. Body material: Forged Brass, Stainless Steel
4. Ambient temp.: 0°C~65°C Fluids temp.: 0°C~130°C
5. Flow as the arrow, mounts in any position; Best position is solenoid vertical and upright direction.
6. Voltage: AC 220V/230V/110V DC 24V Voltage Tolerance: +10% to -10% applicable voltage
7. This series valve are offered NBR, VITON, EPDM etc for seals and diaphragm to provide on-off various fluids.

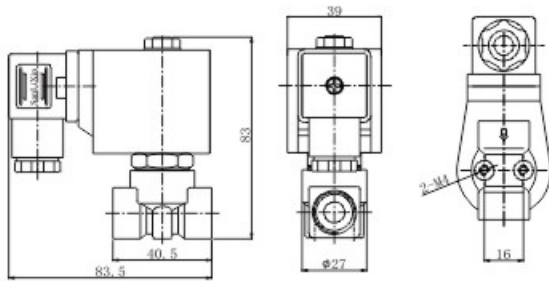
Normally Closed

De-energized

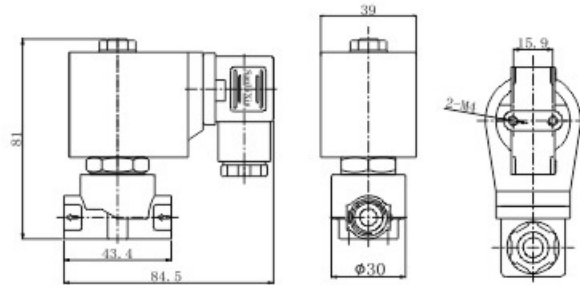
Energized



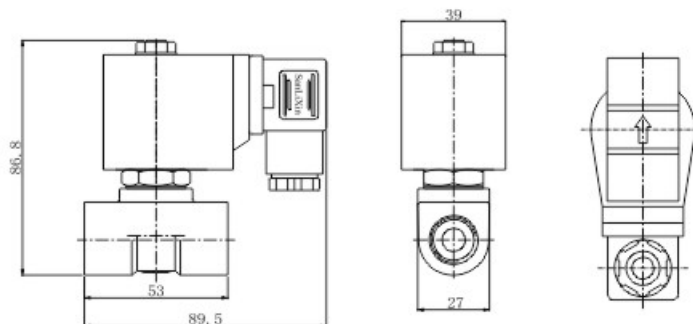
ø2, ø2.5, ø3, ø4 (1/8", 1/4", 3/8")



ø4, ø5, ø6, ø7.5 (1/8", 1/4")



ø5, ø6 (3/8", 1/2")



Sanlixin Solenoid Valve

SMP Compact Series 2/2-way Direct Acting Solenoid Valve · Normally Closed



Valve Selection List

Pipe Conn-ection	Orifice mm	CV Factor	Operating pressure differential(kgf/cm ²)						Coil Type	Coil Class	Max. fluids Temp. °C	Model Code		Weight Kg	
			Min.	Max.								Follows Voltage are 220VAC			
				Air Gas		Water Hot water Liquids		Light oil ≤20CST				Forged Brass	SS 316		
				AC	DC	AC	DC	AC							DC
1/8"	2	0.14	0	30	30	30	30	30	30	M	F	80	SMP1MF02N1A02	SMP1MF02N3A02	0.48
	2	0.14	0	30	30	30	30	—	—	M	F	130	SMP1MF02E1A02	SMP1MF02E3A02	
	2	0.14	0	30	30	30	30	30	30	M	F	120	SMP1MF02V1A02	SMP1MF02V3A02	0.48
	2.5	0.23	0	30	30	30	30	30	25	M	F	80	SMP1MF02N1AC3	SMP1MF02N3AC3	
	2.5	0.23	0	30	30	30	30	—	—	M	F	130	SMP1MF02E1AC3	SMP1MF02E3AC3	
	2.5	0.23	0	30	30	30	30	30	25	M	F	120	SMP1MF02V1AC3	SMP1MF02V3AC3	0.48
	3	0.25	0	30	28	30	28	30	25	M	F	80	SMP1MF02N1A03	SMP1MF02N3A03	
	3	0.25	0	30	28	30	28	—	—	M	F	130	SMP1MF02E1A03	SMP1MF02E3A03	
	3	0.25	0	30	28	30	28	30	25	M	F	120	SMP1MF02V1A03	SMP1MF02V3A03	0.48
	4	0.6	0	30	24	30	24	—	—	M	F	80	SMP1MF02N1A04	SMP1MF02N3A04	
	4	0.6	0	30	24	30	24	—	—	M	F	130	SMP1MF02E1A04	SMP1MF02E3A04	
	4	0.6	0	30	24	30	24	30	20	M	F	120	SMP1MF02V1A04	SMP1MF02V3A04	
1/4"	5	0.65	0	25	8	25	8	25	6	M	F	80	SMP1MF02N1A05	SMP1MF02N3A05	0.46
	5	0.65	0	25	8	25	8	—	—	M	F	130	SMP1MF02E1A05	SMP1MF02E3A05	
	5	0.65	0	25	8	25	8	25	6	M	F	120	SMP1MF02V1A05	SMP1MF02V3A05	0.46
	6	0.8	0	16	3	16	3	16	2	M	F	80	SMP1MF02N1A06	SMP1MF02N3A06	
	6	0.8	0	16	3	16	3	—	—	M	F	130	SMP1MF02E1A06	SMP1MF02E3A06	
	6	0.8	0	16	3	16	3	16	2	M	F	120	SMP1MF02V1A06	SMP1MF02V3A06	
	2	0.14	0	30	30	30	30	30	30	M	F	80	SMP1MF02N1B02	SMP1MF02N3B02	0.47
	2	0.14	0	30	30	30	30	—	—	M	F	130	SMP1MF02E1B02	SMP1MF02E3B02	
	2	0.14	0	30	30	30	30	30	30	M	F	120	SMP1MF02V1B02	SMP1MF02V3B02	0.47
	2.5	0.23	0	30	30	30	30	30	25	M	F	80	SMP1MF02N1BC3	SMP1MF02N3BC3	
	2.5	0.23	0	30	30	30	30	—	—	M	F	130	SMP1MF02E1BC3	SMP1MF02E3BC3	
	2.5	0.23	0	30	30	30	30	30	25	M	F	120	SMP1MF02V1BC3	SMP1MF02V3BC3	
3	0.25	0	30	28	30	28	30	25	M	F	80	SMP1MF02N1B03	SMP1MF02N3B03	0.47	
3	0.25	0	30	28	30	28	—	—	M	F	130	SMP1MF02E1B03	SMP1MF02E3B03		
3	0.25	0	30	28	30	28	30	25	M	F	120	SMP1MF02V1B03	SMP1MF02V3B03	0.47	
4	0.6	0	30	24	30	24	30	20	M	F	80	SMP1MF02N1B04	SMP1MF02N3B04		
4	0.6	0	30	24	30	24	—	—	M	F	130	SMP1MF02E1B04	SMP1MF02E3B04		
4	0.6	0	30	24	30	24	30	20	M	F	120	SMP1MF02V1B04	SMP1MF02V3B04	0.45	
5	0.65	0	25	8	25	8	25	6	M	F	80	SMP1MF02N1B05	SMP1MF02N3B05		
5	0.65	0	25	8	25	8	—	—	M	F	130	SMP1MF02E1B05	SMP1MF02E3B05		
5	0.65	0	25	8	25	8	25	6	M	F	120	SMP1MF02V1B05	SMP1MF02V3B05		
6	0.8	0	16	3	16	3	16	2	M	F	80	SMP1MF02N1B06	SMP1MF02N3B06	0.45	
6	0.8	0	16	3	16	3	—	—	M	F	130	SMP1MF02E1B06	SMP1MF02E3B06		
6	0.8	0	16	3	16	3	16	2	M	F	120	SMP1MF02V1B06	SMP1MF02V3B06		

SMP Compact Series 2/2-way Direct Acting Solenoid Valve · Normally Closed



Valve Selection List

Pipe Conn-ection	Orifice mm	CV Factor	Operating pressure differential(kgf/cm ²)						Coil Type	Coil Class	Max. fluids Temp. °C	Model Code		Weight Kg		
			Min.	Max.								Follows Voltage are 220VAC				
				Air Gas		Water Hot water Liquids		Light oil ≤20CST				Forged Brass	SS 316			
				AC	DC	AC	DC	AC							DC	
3/8"	3	0.25	0	30	28	30	28	30	25	M	F	80	SMP1MF02N1C03	SMP1MF02N3C03	0.47	
	3	0.25	0	30	28	30	28	—	—	M	F	130	SMP1MF02E1C03	SMP1MF02E3C03		
	3	0.25	0	30	28	30	28	30	25	M	F	120	SMP1MF02V1C03	SMP1MF02V3C03		
	3/8"	4	0.6	0	30	24	30	24	30	20	M	F	80	SMP1MF02N1C04	SMP1MF02N3C04	0.47
		4	0.6	0	30	24	30	24	—	—	M	F	130	SMP1MF02E1C04	SMP1MF02E3C04	
		4	0.6	0	30	24	30	24	30	20	M	F	120	SMP1MF02V1C04	SMP1MF02V3C04	
		5	0.65	0	25	8	25	8	25	6	M	F	80	SMP1MF02N1C05	SMP1MF02N4C05	0.56
		5	0.65	0	25	8	25	8	—	—	M	F	130	SMP1MF02E1C05	SMP1MF02E4C05	
		5	0.65	0	25	8	25	8	25	6	M	F	120	SMP1MF02V1C05	SMP1MF02V4C05	
		1/2"	6	0.8	0	16	3	16	3	16	2	M	F	80	SMP1MF02N1C06	SMP1MF02N4C06
6	0.8		0	16	3	16	3	—	—	M	F	130	SMP1MF02E1C06	SMP1MF02E4C06		
6	0.8		0	16	3	16	3	16	2	M	F	120	SMP1MF02V1C06	SMP1MF02V4C06		
1/2"	5		0.65	0	25	8	25	8	25	6	M	F	80	SMP1MF02N1D05	SMP1MF02N4D05	0.55
	5	0.65	0	25	8	25	8	—	—	M	F	130	SMP1MF02E1D05	SMP1MF02E4D05		
	5	0.65	0	25	8	25	8	25	6	M	F	120	SMP1MF02V1D05	SMP1MF02V4D05		
	6	0.8	0	16	3	16	3	16	2	M	F	80	SMP1MF02N1D06	SMP1MF02N4D06	0.55	
	6	0.8	0	16	3	16	3	—	—	M	F	130	SMP1MF02E1D06	SMP1MF02E4D06		
	6	0.8	0	16	3	16	3	16	2	M	F	120	SMP1MF02V1D06	SMP1MF02V4D06		

SMP Series Coil parameters tables

Coils Model code	Voltage	Power consumption		DC (W)	
		Inrush	Holding	Inrush	Holding
SM-3101	AC220V	78VA	4.5VA	350mA	20mA
SM-3102	AC110V	72VA	5.0VA	660mA	45mA
SM-3106	DC24V	50W	7.2W	2185mA	350mA
SM-3104	AC24V	19VA	6.5VA	940mA	310mA