

Sanlixin Solenoid Valve

SLGA Series 2/2-Way High Pressure Solenoid Valve · Normally Closed

2-Way normally closed solenoid valve;
 Closed when de-energized, open when energized.
 Special solenoid valve for bottle blowing machine.

Main technical parameters

- 1:** Working pressure: 0.5 ~ 50 kg/cm²
- 2:** Ambient Temperature: 0~65°C Media Temperature: 0-90°C
- 3:** Fixed as the arrow, best position is solenoid vertical and upright direction.
- 4:** Voltage: AC 220V/230V/110V/120V
 DC 24V/12V ±10% applicable voltage;
- 5:** Seals:NBR VITON EPDM
- 6:** diaphragm material:PU
- 7:** Body material: brass
- 8:** Can fix SM coil.



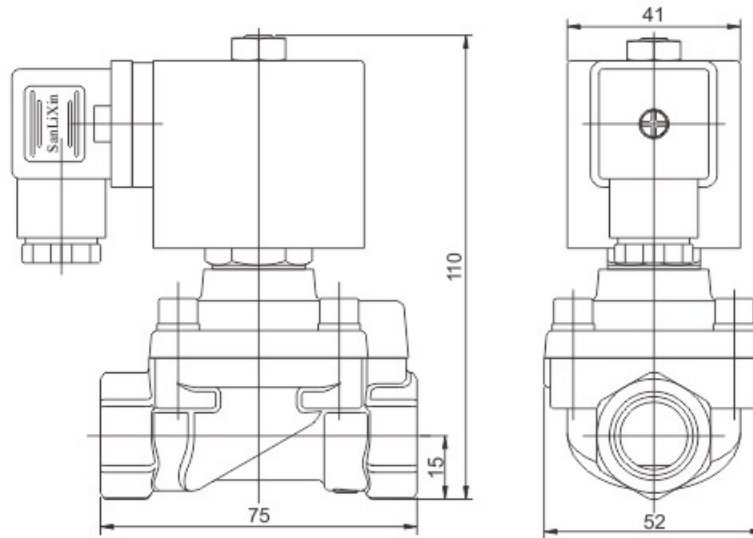
Solenoid Valves Numbering System for Order

Position description	1	2	3	4	5	6	7	8	9	10
	Valve Series	Mode of Operation	Coil Type	Coil Class	Voltage	Seal Material	Body Material	Pipe Size	Orifice φ mm	Options
E.G.	SLGA	1	D	F	02	V	1	D	15	<input type="checkbox"/>
		1: Normally Closed	D: DIN Standard Connections, Fully Encapsulated M= SM Coil	F= Class	02= AC220V AC230V 13=DC24V	V=VITON	1= Forged Brass	C=3/8" D=1/2 "	15=15	L= Neon lamp N: NPT Connection

Sanlixin Solenoid Valve

SLGA Series 2/2-Way High Pressure Solenoid Valve • Normally Closed

SLGA Construction, External Dimensions Chart



External Dimensions Chart

SIZE	Orifice mm	CV factor	Operating pressure differential kgf/cm ²						Power		Max temp. °C	Model Code Follows Voltage are 220VAC Seal material is VITON Forged Brass	Weight Kg	
			min press ure	Max pressure						VA				W
				Air Gas		Water Liquids		Light oil 20CST		AC				DC
				AC	DC	AC	DC	AC	DC	220V				24V
3/8"	14.5	4.5	0.5	50	50	50	50	50	50	19	17	110	SLGA1DF02V1C15	0.9
1/2"	14.5	4.5	0.5	50	50	50	50	50	50	19	17	110	SLGA1DF02V1D15	0.9